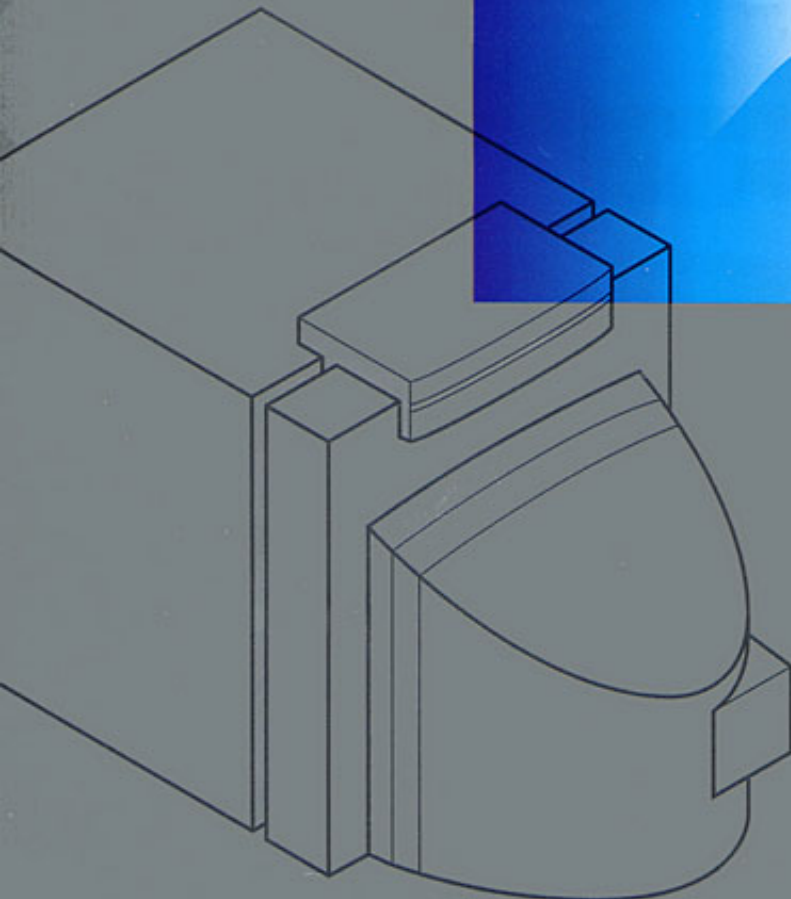
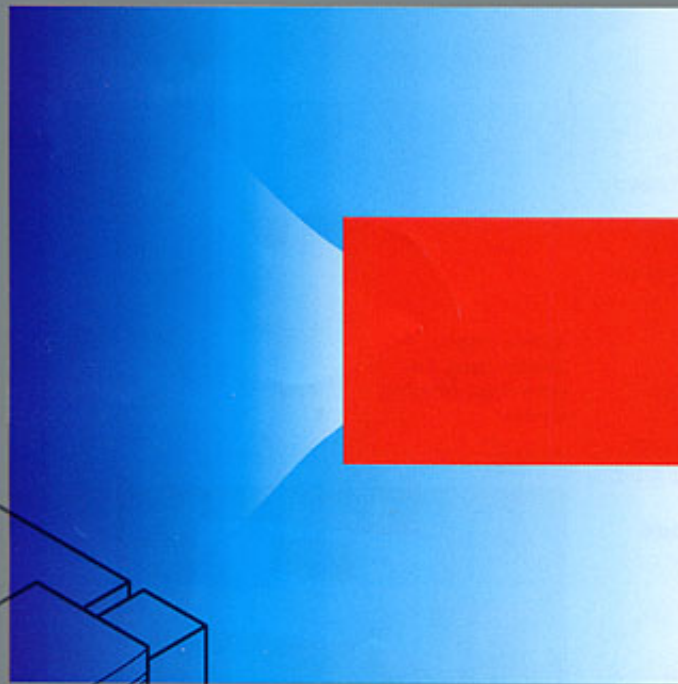


Oil-/gas-fired hot water heating boiler
for modulating boiler water temperatures
Rated input: 83 to 300 MBH

VIESSMANN

VITOLA 200

*Low temperature hot water heating boiler
with biferral sandwiched heat exchanger
surface*



VITOLA 200

Oil-/gas-fired hot water heating boiler for modulating boiler water temperatures without low limit with biferral sandwiched heat exchanger surface of cast-iron and steel
 Rated input: 83 to 300 MBH

VISSMANN

Viessmann Manufacturing Company Inc.
 750 McMurray Road
 Waterloo, ON • N2V 2G5 • Canada
 Tel: (519) 885-6300 Fax: (519) 885-0887

Viessmann Manufacturing Company (U.S.) Inc.
 83 Vermont Avenue, Building #3
 Warwick, RI • 02888 • U.S.A.
 Tel: (401) 732-0667 Fax: (401) 732-0590



High quality and performance. The double-wall, sandwiched heat exchanger surfaces of the Vitola 200 represent a milestone in the history of modern heating technology. The Vitola 200 combines user comfort and convenience with economy – it even switches off completely when no heat is required.



Biferral sandwiched heat exchanger surface

The benefits at a glance:

- **Biferral heat exchanger surface** of cast-iron and steel for high operational reliability and a long service life.
- **Clean combustion** and clean burnout of the flame through optimized combustion chamber geometry. Combustion chamber made of stainless steel. Flue gas temperature adjustable for oversized chimneys.
- Meets the specifications of the German "Blue Angel" environmental certificate and Swiss clean air regulations.
- Extremely economical and environmentally friendly through modulating boiler water temperature; the boiler switches off completely when no heat is required. **AFUE up to 87%.**
- Reliable heat transfer due to **wide water walls and large water content.**
- All Viessmann Chassis burners are computer-tested at operating temperature and matched to the boiler output in the factory. This facilitates adjustments and faster start-up on site.

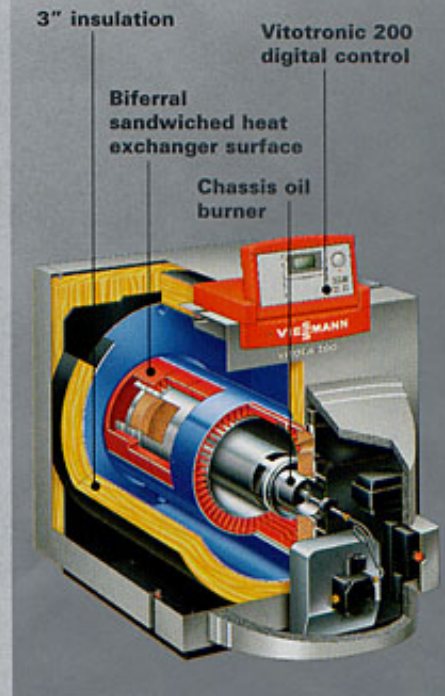


Vitola 200 – modulating oil-/gas-fired heating boiler

WWW.UNITEDENERGY.CA



Vitotronic – the new generation of controls: intelligent, easy to install, operate and service



VITOLA 200		Model	VB2-	18	22	33	40	50	63
Rated input oil		MBH	83	107	135	170	219	300	
Rated input gas		MBH	90	116	146	185	238	300	
Total dimensions	Depth	inches	31	37½	40	40¾	46¼	50¾	
	Width	inches	25	27½	27½	30½	30½	30½	
	Height	inches	36¾	38½	38½	40	42¾	42¾	
Weight (incl. insulation)		lbs	380	435	540	695	865	940	
Boiler water content		USG	18.5	23.2	31.2	37.0	52.6	59.0	

Technical information subject to change without notice.

5167 401 05/00 Printed in Canada